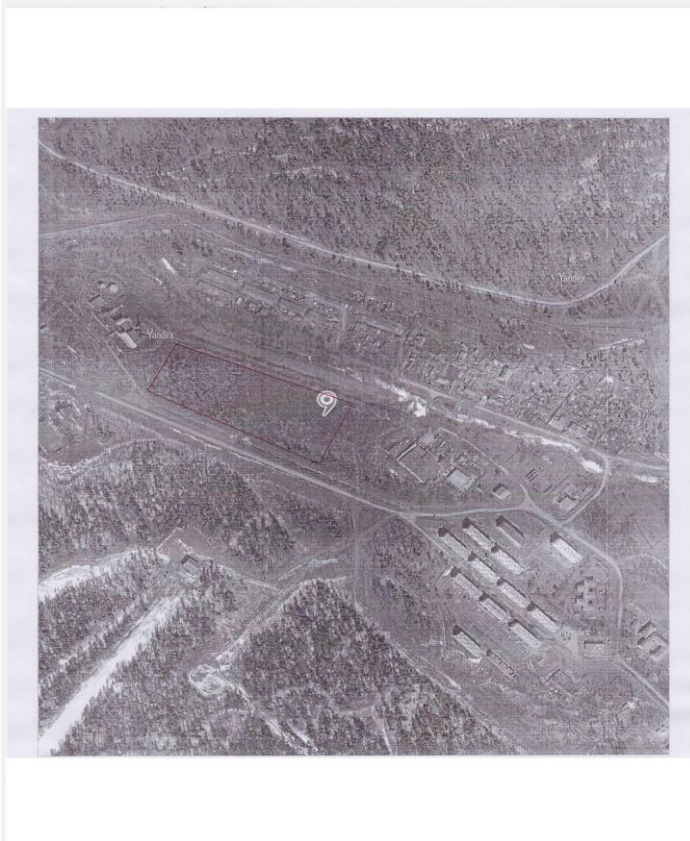


Plot of Land

Primorsky Krai, Svetlogorie



Vacant **industrial land**, ha

2.8

SITE BRIEF:

[General Information; Location; Contacts](#)

[Transport accessibility](#)

[Infrastructure](#)

[Preferences](#)

General Information; Location; Contacts

	Site characteristics	Description
1.	Cadastral number	The Site is not registered with the State Cadastral Authorities.
2.	Location	Landmark location: ul. V. Khomyakova 4, Svetlogorie
3.	Location description	About 800 m to the north-west from the landmark
4.	Land use category	Industrial land
5.	Site in brief	The slightly sloping site with a flat topography
6.	Type of ownership (private, public, public-private)	Public
7.	Management company or similar (MC)	Svetlogorie Administration
8.	MC Address (postal, electronic, web-site)	Ul. V. Khomyakova 4, Svetlogorie, Pozharsky District, Primosky Krai, 692028 admssp@mail.ru www.admsvetlogorie.ru
9.	MC contact responsible for relations with potential residents/investors (full)	Denis O. Litvichenko, Head of the Svetlogorie Administration 8-42357-35-4-32

	name, title, phone number and e-mail)	admssp@mail.ru
10.	Site Development Concept (web-site, if any) (yes/no)	No
11.	Site business lines (major projects, SME projects, mixed-type projects)	SME projects
12.	Industry specialization	Small food production enterprises; clothing facilities; other social enterprises

Transport accessibility

	Characteristics	Current status	Projections
1.	Distance to the nearest town	25 km to Bikin (Khabarovsky Krai)	-
2.	Distance to the regional centre	570 km to Vladivostok	-
3.	Distance to Moscow	6,670 km	-
4.	Distance to the nearest highway	Ussuri-Khabarovsk-Vladivostok Federal Highway, 17 km	-
5.	Any roads connecting the Site with the nearest highway, distance and road condition	17 km	
6.	Any motor roads across the Site (yes/no)	No	
7.	Any connections to railways (yes/no)	No	
8.	Any offloading rail terminal facilities (yes/no)	No	
9.	Distance to the nearest international airport	200 km to Khabarovsk	
10	Distance to the nearest river port	200 km to Khabarovsk	
11	Distance to the nearest sea port	570 km to Vladivostok	

Infrastructure

	Characteristics	Current status	Projections
<i>Area of the Site</i>			
1	Total area (ha)	2.8	
2	Vacant plots of industrial land (ha)	2.8	
<i>Utilities</i>			
3	Availability of utilities (yes/no, comments). Distance from the Site to utilities (km), available capacity of: - electric mains - heat supply system - gas supply system; - water supply network, - sewerage system	Yes 0.05 km, 2,000 kW 0.05 km, 2.5 Gcal No 0.1 km, 50 cu m/h 0.02 km, 50 cu m/h Construction of new utilities is not required. Connection to existing utility systems is possible.	
<i>Workforce</i>			
4	Transport service between the Site and the settlements	Yes, regular bus services	
5	Total workforce estimates within a 50-km radius of the Site (people, thousand)	0,9* (for Svetlogorie)	
6	Approximate number of unoccupied able-bodied population (people, thousand)	0.3* (for Svetlogorie)	
<i>Social infrastructure in 30-minute proximity to the Site</i>			

7	Hospitals (yes/no, proximity to the nearest one)	Yes, 25 km
8	Shops (yes/no, proximity)	Yes, 25 km
9	Housing for the Site staff (yes/no, proximity)	No
10	Hotels for the Site staff (yes/no, proximity)	Yes, 25 km

Preferences for Residents

In terms of initial cost

	Preferences	Statutory document and approving authority	Statutory document validity
1	Subsidies on SME projects	Resolution by the Svetlogorie Administration No. 13 dd. 16.04.2014 "On SME Development and Support in Svetlogorie"	2014-2015
2	Subsidies on lease payments to acquire fixed assets		

In terms of operating costs – none